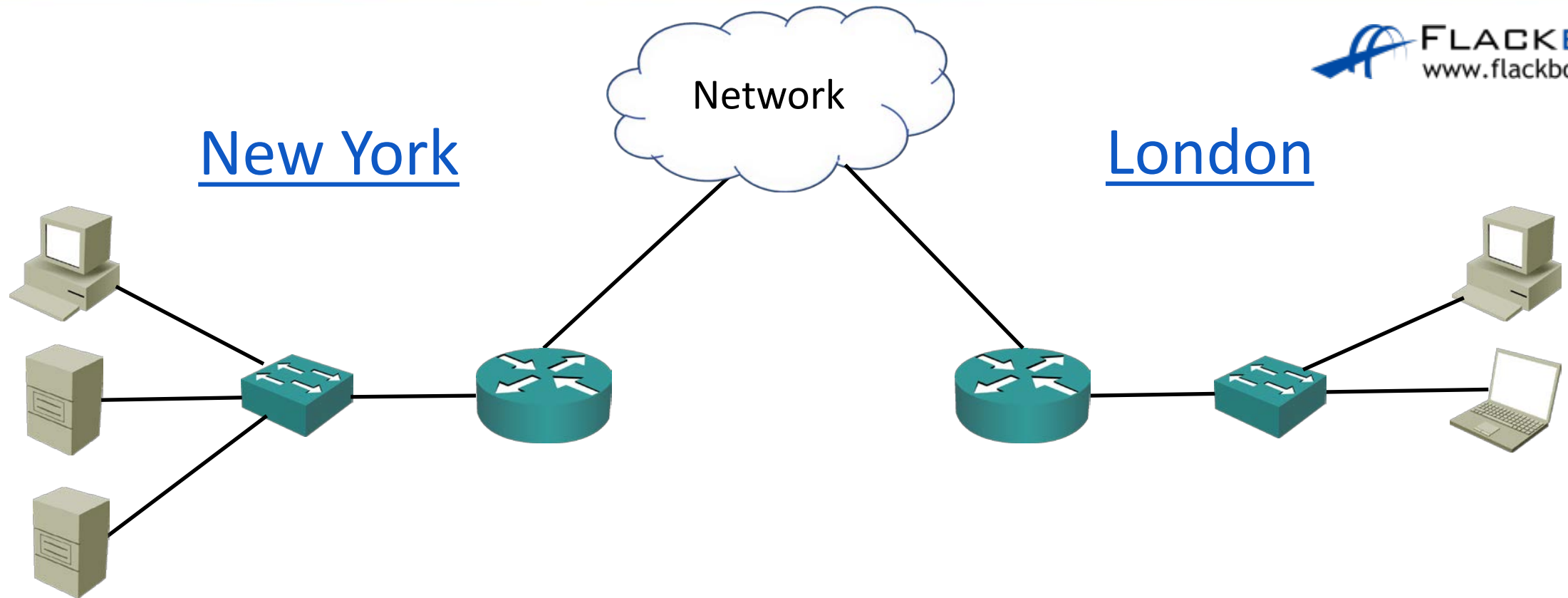


Connecting to a Cisco Device over the network

- The lab exercises in this course use Cisco Packet Tracer simulation software on your PC.
- See Section 2 'How to Set Up the Lab' for step by step instructions on how to use Packet Tracer for the course lab exercises.
- This lecture shows how to connect to a real router or switch over the network with Putty.
- You do not need to install or use Putty to do the course lab exercises.

Connecting over the network



Connecting to a Cisco Device



- To get to the Command Line Interface for day to day management of a Cisco device you will use Secure Shell (SSH) to connect to it's management IP address over the network.
- Telnet is also supported but not recommended because it is insecure.
- In enterprise networks, secure login will typically be enforced through integration with a centralised AAA (Authentication, Authorization and Accounting) server.
- We will cover SSH and AAA in later lessons.

Out of Band Management

